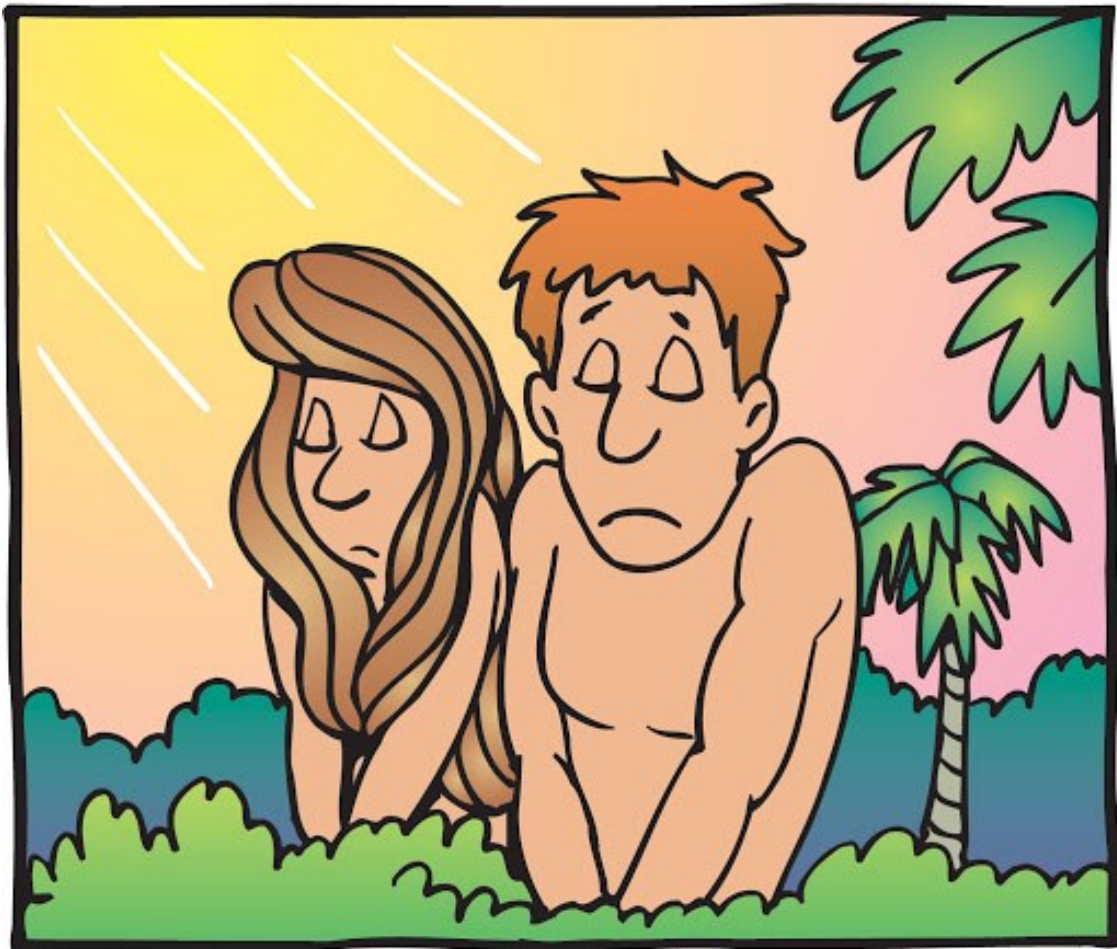


Lesson 4:

Sin entered the world



Facts check!



Temptation in the Garden

Complete the sentences by filling in the blanks with the correct words from the word bank at the bottom of the page.



Now the _____ was more crafty than any of the wild animals the LORD God had made. He said to the woman, "Did God really say, 'You must not _____ from any _____ in the garden'?"

The woman said to the serpent, "We may eat _____ from the trees in the garden, but God did say, 'You must not eat fruit from the tree that is in the _____ of the garden, and you must not touch it, or you will _____.'"

"You will not surely die," the serpent said to the woman. "For God knows that when you eat of it your _____ will be opened, and you will be like God, knowing _____ and _____."

When the woman saw that the fruit of the tree was good for food and pleasing to the eye, and also desirable for gaining wisdom, she took some and ate it. She also gave some to her _____, who was with her, and he ate it.

Genesis 3:1-6 (NIV)

DIE	EAT	FRUIT	MIDDLE	SERPENT
GOOD	EVIL	HUSBAND	TREE	EYES

Word Search

Temptation in the Garden

"You will not surely die," the serpent said to the woman. "For God knows that when you eat of it your eyes will be opened, and you will be like God, knowing good and evil." Genesis 3:4-5 (NIV)

The puzzle is based on Genesis 3:1-7 (NLT).



X E A T E Z N L L T L S Y G I
S E R P E N T A O G O X C J P
G V O T P S N D K V K U H G Y
O R X K Q D N J Y E Z V C A E
O X Q F L A F F T E D Q G H T
D V Z I B N K F Y C R A F T Y
G E W S I R I N J N C F W K Q
J W U E F E K B O T R E O D K
A H F Y R F V F D W B Z M I A
M N U E U O J I P W S F A E V
T I I S I O E L L Z I R N P Q
D R D M T D M Q P O J S K X Q
F B E D A U X B V P G A D B U
G G X E L L F T C Q E N W O D
K R I P S E S T G A R D E N M

KNOW

EAT

EVIL

MIDDLE

EYES

DIE

WOMAN

WILD

GOOD

TREES

FOOD

SERPENT

CRAFTY

HUSBAND

FRUIT

TOUCH

ANIMALS

WISDOM

GARDEN

NAKED